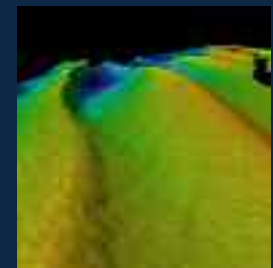
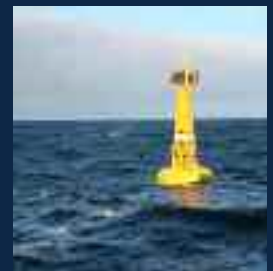
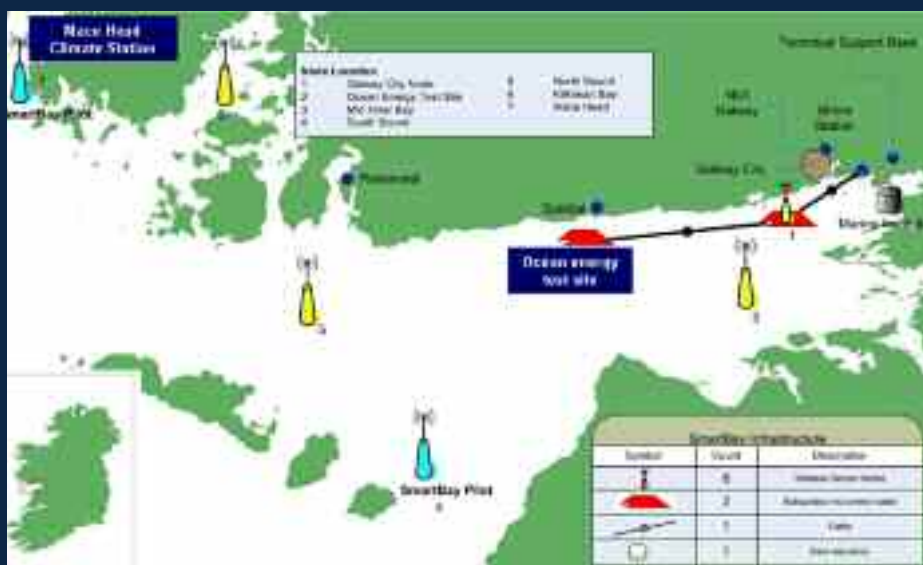


Technology platforms under test and development in the SmartBay Facility include;

- Wireless and subsea sensor networks for marine monitoring and resource management
- Sensor web and mobile data solutions
- Real time acoustic monitoring systems
- Integrated data management and visualisation tools
- Advanced modelling and forecast tools for offshore operational support
- Digital design tools for marine applications

Key Features of SmartBay Platform

- High performance / Low power data acquisition and transmission system
- Large Power Capacity for multiple sensors, interchangeable components allowing easy integration of test sensors
- Single, bridle, or multipoint moorings through the hull compartment
- Robust construction - High stability in operation
- Standard Wiring looms interoperable instrumentation
- Spare capacity (power, RS232) for additional instruments via a generic connector
- Variety of Communications Protocols GPRS/Satellite/VHF/Wimax/GSM



SmartBay Ireland, Research, Test and Demonstration Facility for Marine Information and Communications Technologies (ICT)

Facilitating the development of ICT enabled decision support tools for the global marine sector.

- **Marine Monitoring**
- **Offshore Energy**
- **Marine Leisure**
- **Security and Logistics**
- **Aquaculture**
- **Shipping**

SmartBay Ireland is facilitating the development of innovative approaches to distributed sensing, communication and data management/visualisation technologies through deployment in a real world marine environment.

The infrastructure can be accessed by industrial and academic research groups for test and demonstration purposes.

The SmartBay pilot infrastructure was established by the Irish Marine Institute and the Environmental Protection Agency in 2008. The facility is deployed in Galway Bay on the West Coast of Ireland.

SmartBay comprises a suite of commercially available technology platforms including a network of buoys, sensor hardware and communication systems against which new technologies can be validated.

The pilot infrastructure and associated data is currently managed as a research facility by the Irish Marine Institute. SmartBay operates a non-exclusive open access data policy. However an exclusive restricted access option can also be made available for specific development projects.

